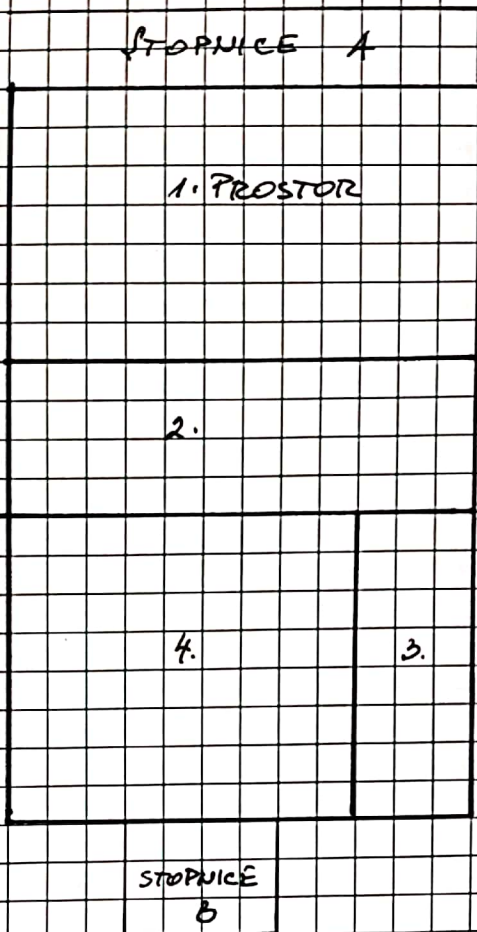
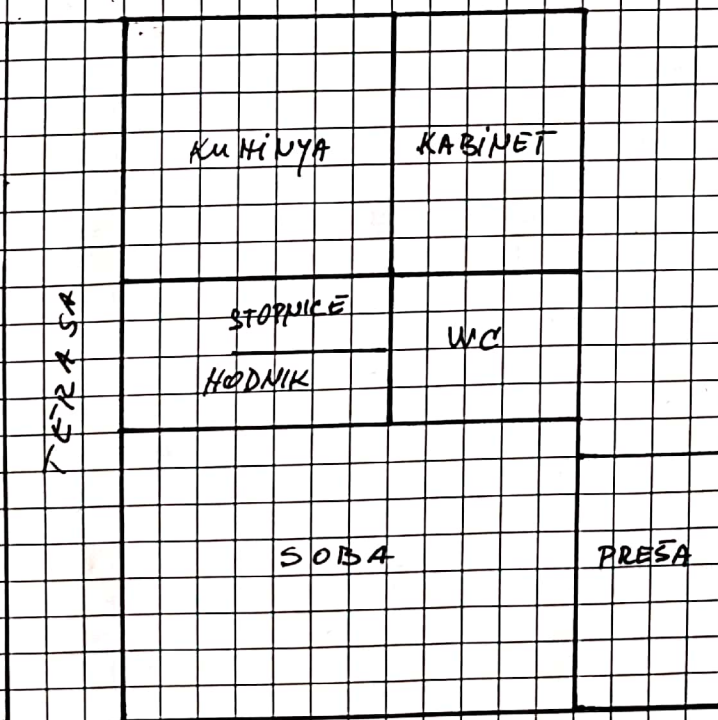


KLET:



1.	PROSTOR	$6'0 \times 3'5 = 21'0$
2.	"	$6'0 \times 2'0 = 12'0$
3.	"	$4'0 \times 1'7 = 6'8$
4.	"	$4'0 \times 4'0 = 16'0$
		<u>$55'8 \text{ m}^2$</u>

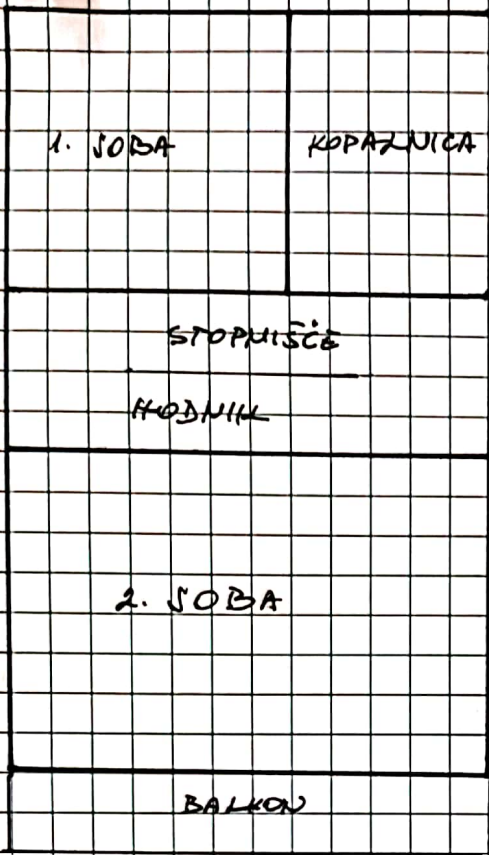
PRITLICE:



kuhinja	$3'6 \times 3'3 = 11'88$
kabinet	$3'6 \times 2'4 = 8'60$
soba	$6'0 \times 3'8 = 22'80$
wc	$2'2 \times 1'3 = 2'86$
hodnik	$= 6'00$
stopnice	$4'34$
<u>$56'40 \text{ m}^2$</u>	

prosa terasa $3'0 \times 1'8 = 6'5 \text{ m}^2$

PLANSARDA:



1. SOBA	(3'6" x 3'3" = 11'88")	3'6" x 2'7" =	9'70	
2. SOBA	(6'0" x 3'8" = 22'80")	4'0" x 4'0" =	16'00	
hizalnica	(3'6" x 2'4" = 8'64")	3'6" x 2'4" =	8'64	
hodnik	= 9'60)	=	7'90	
stopnice		=	3'60	45'84
balcon	(6'0" x 1'1" = 6'60)	4'0" x 1'1" =	4'40	